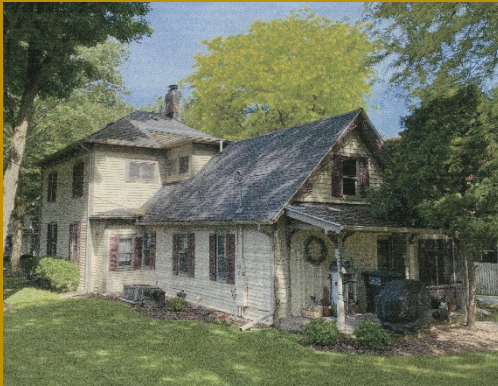




LENAWEE
HISTORICAL
SOCIETY

HISTORIC STRUCTURE



425 State Street, Adrian

WHEREAS, historic structures are not only tangible evidence of important national history, but tell the stories of generations of citizens of Lenawee County and their triumph and tragedies as well; and

WHEREAS, the Lenawee Historical Society created its “Historic Structures” program to identify and celebrate places in Lenawee County, Michigan, that connect people to their individual and collective heritage, and to work toward creating an environment that will support the preservation and rehabilitation of historic buildings and neighborhoods, celebrate economic development of sites, and manage change in communities; and

WHEREAS, the structure at 425 State Street is one of the oldest homes in Adrian; and

WHEREAS, the rear Gothic Cottage style portion was likely built about 1840 with the front portion, built in an early Italianate style added later; and

WHEREAS, Jane Roode Moffit resided in the home for nearly 70 years; and

WHEREAS, the home was once owned by a granddaughter of Ulysses S. Grant;

THEREFORE, the directors of the Lenawee Historical Society do hereby PROCLAIM 425 State Street in Adrian, currently the home of Michael Allen and Janice Whelan, as a HISTORIC STRUCTURE in Lenawee County this 13th day of January 2023.